

Hard and Soft "c" - Part 1



You're reading with...



the ostriches!

Getting Ready - A Broad View of the Landscape Before You Begin



The consonants "c" and "g" each make two sounds. So far, we have only introduced words containing the first sound - called the hard sound - of "c" and "g". This "hard" sound is the most frequently heard sound of "c" and "g" in our language, and it is the sound first taught in "The Sounds of the Letters" song, in this reading system. The "hard" sound is heard if the "c" or "g" is followed by an "a", "o", or "u". The second sound of "c" and "g" is called a "soft" sound. Four expeditions (two for each of these letters) are dedicated to teaching the difference between the "hard" sound and the "soft" sound of these letters.

So, how does a reader determine when a word contains a hard sound or soft sound? Actually, it's not too difficult, once the reader is familiar with the rule. Of course, we've put that rule to music. Listen to the song entitled *Soft 'c' and 'g'* that is found on track 23.

Rule: When "c" is followed by an "e", "i", or "y", it usually will have a "soft" sound, like "s". When "g" is followed by an "e", "i" or "y", it will have a "soft" sound, like "j".

Turn to page 205 in *The Reading Place*. Read the cover page to your safari mate. Then, turn the page and read the words listed with the soft "c" sound aloud with your reader. Then, ask him or her to read them independently.

Taking a Closer Look - Sample Dialogue to Help Direct Your Course

Tour Guide: "We know that vowels can say two different kinds of sounds, don't we? What are those two kinds of sounds?"

Reader: "Long and short."

Tour Guide: "That's right. Sometimes consonants can make different sounds, too. Two special consonants that can say different sounds are 'c' and 'g'. If a word has a 'c' or a 'g' in it and the 'c' or 'g' is followed by an 'e', 'i', or 'y', the 'c' will make a sound like an 's' and the 'g' will make a sound like a 'j'. For right now, let's just look at 'c'. Here's what I mean. (Tour Guide writes the word 'cent' on a 3x5 card, or paper) Look at this word. The 'c' makes a sound like an 's' because the letter 'e' follows it. This is true even when the 'c' is in the middle of a word, such as in the word 'face'. The 'c' will sound like an 's', if an 'e', 'i', or 'y' follows it. Let's listen to this next song together and learn it. It'll help us remember when a 'c' has this special sound. That special sound is called a 'soft' sound. The way 'c' is usually pronounced is called its 'hard' sound, as in 'cat'. Do you understand the 'soft' and 'hard' rule?"

Reader: "I think so."

Tour Guide: "You'll understand it better after we learn the song and the rule and read the words in *The Reading Place*."



The ostrich is the largest bird living on our planet today.

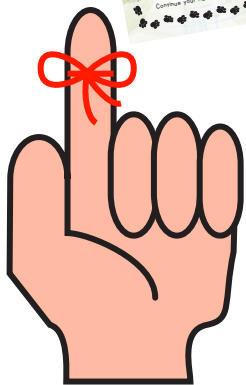
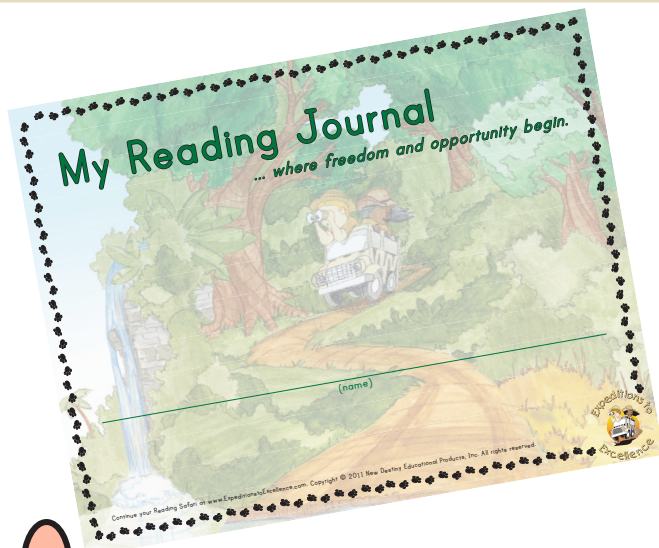
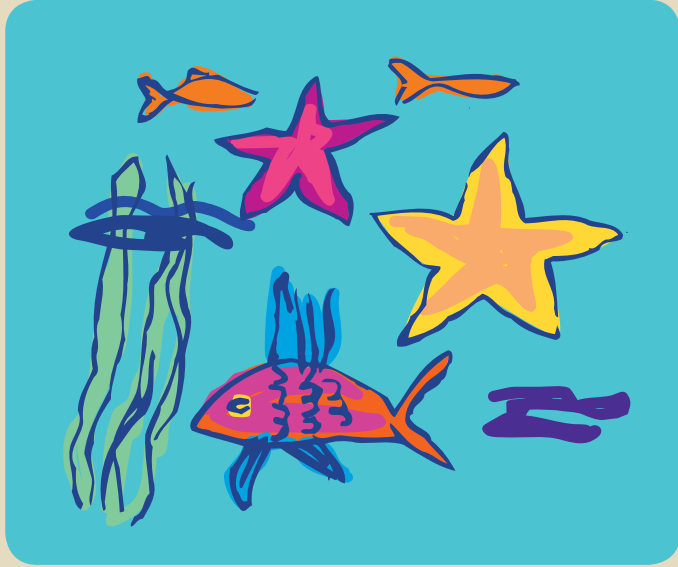
**More Fun...
for Friends**

Felt Board Fun

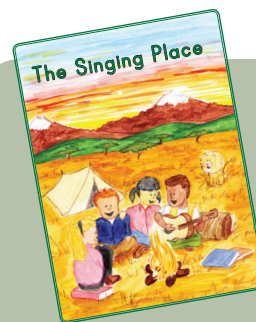
Surely, you've seen felt board stories and figures in your local toy store. They are quite popular with young children, but can be costly to purchase and collect. You can make your own very easily.

Take any large piece of cardboard (from the side of a large box) or a piece of thin plywood board, and glue felt on top of it. Trim the edges or wrap the fabric around the back of the board.

Using felt squares (purchased at any craft store), cut out characters and objects that correspond to favorite stories. Then, ask your safari friend to tell the story from memory, moving the characters and objects on and off of the felt board as the story is told. He or she can embellish the story line, use funny or dramatic voices or even change the ending - be creative! You might even want to encourage your reader to make up a new story and create characters to go along with it.



**Don't forget to record
the books that your
safari mate reads in the
reading journal provided!**



**Soft "c"
and "g"**

If you find a "c" or a "g" (when you're reading),
Before an "e", "i", or "y",

Here's what they say:

The "c" will make the "s" sound: "sss",

And the "g" will sound like "j": "juh".

If you find a "c" or a "g" (when you're reading),
Before an "e", "i", or "y",

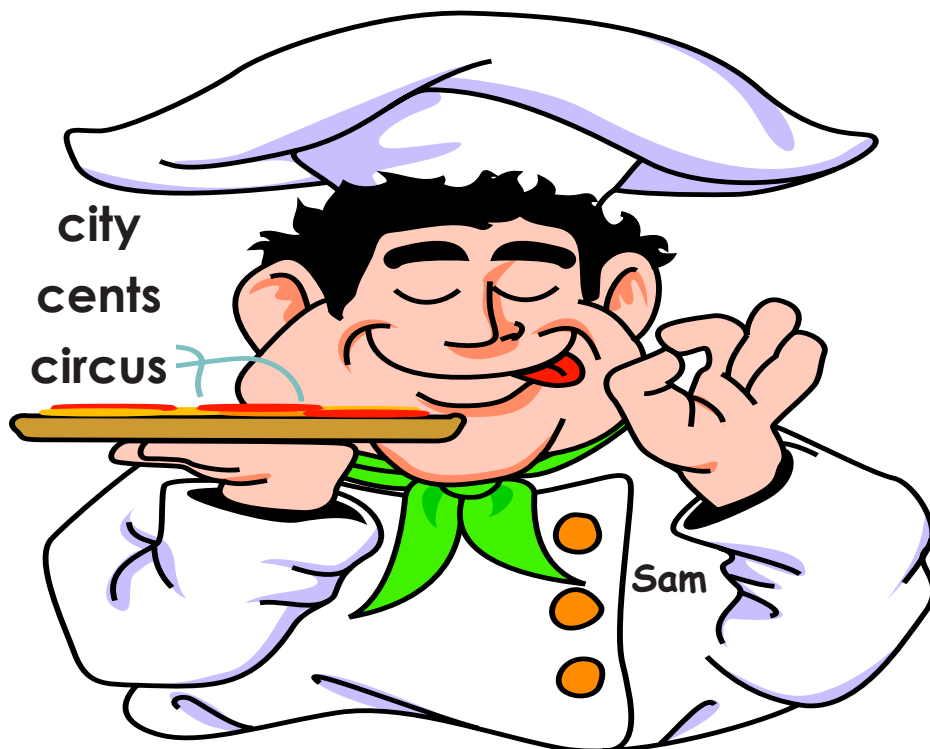
Here's what they say:

The "c" will make the "s" sound: "sss",

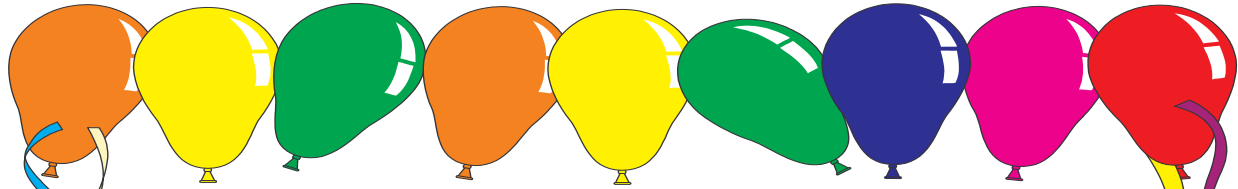
And the "g" will sound like "j": "juh".

A Soft "c" Poem

Silly, Silly Sam,
Is as silly as can be.
Sam can cook up words
That start with a soft "c".
He stirs them in his bowl
With some "e"s and "i"s and "y"s,
And serves them on a plate,
For a yummy "c" surprise!

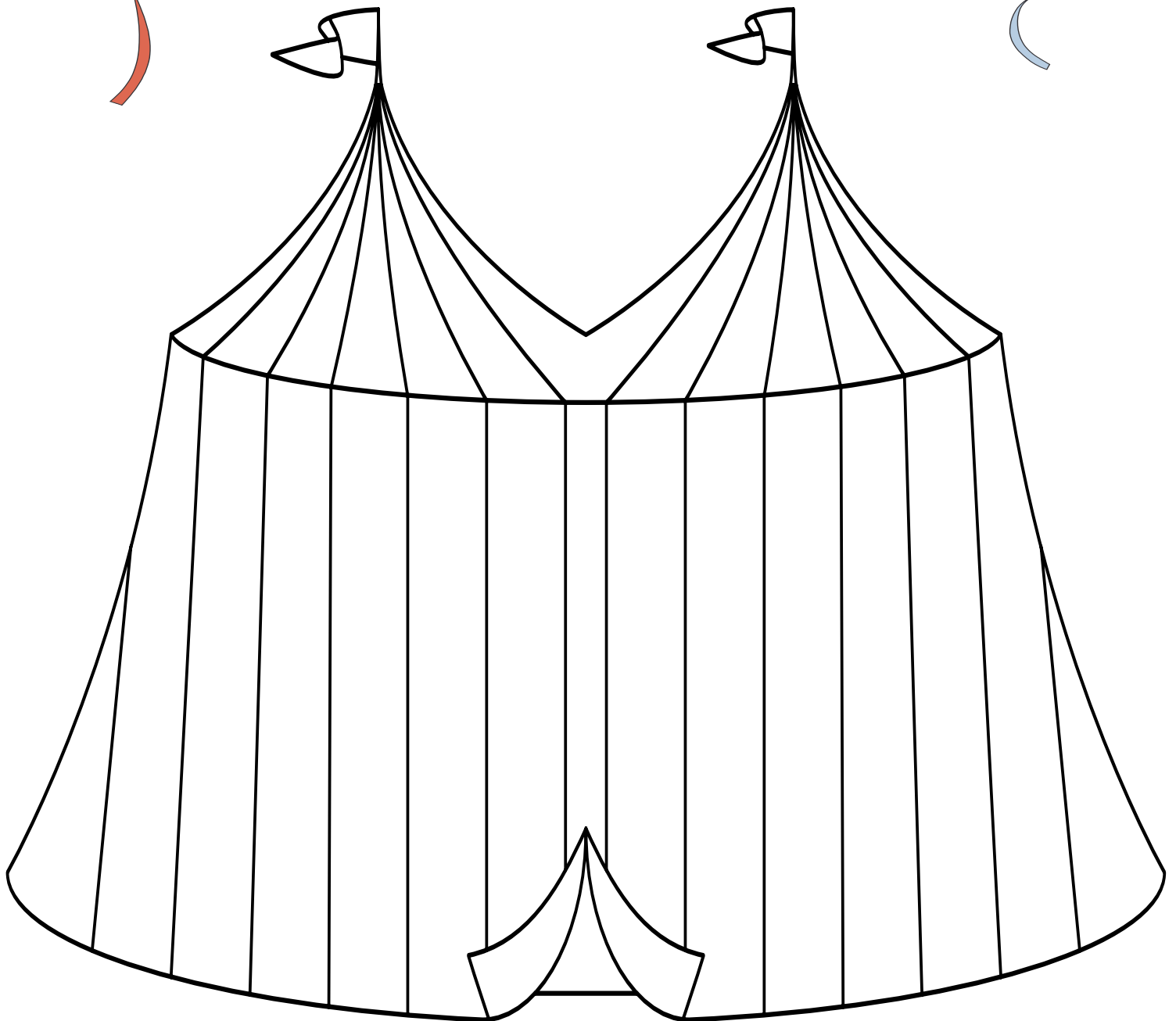


Silly Sam likes soft "c" words. They sound like the "s" in Silly Sam's name!



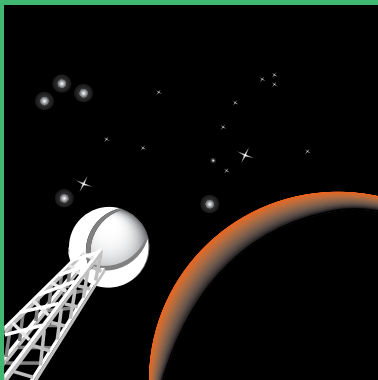
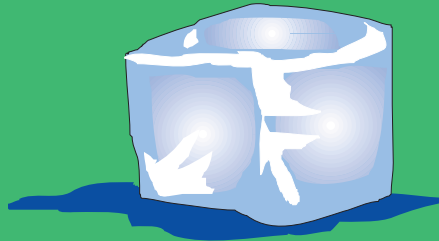
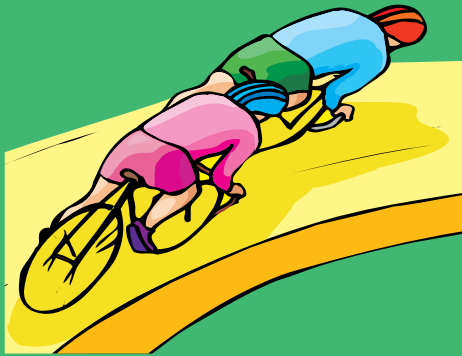
Color the circus tent.

Circus starts with the soft sound of "c",
because the "c" is followed by an "i".





The letter "c" has the soft sound (like "s") even when it appears in the middle of words, if it is followed by an "e", "i" or "y". Draw a line to the picture that matches each word.



face

ice

race

slice

space