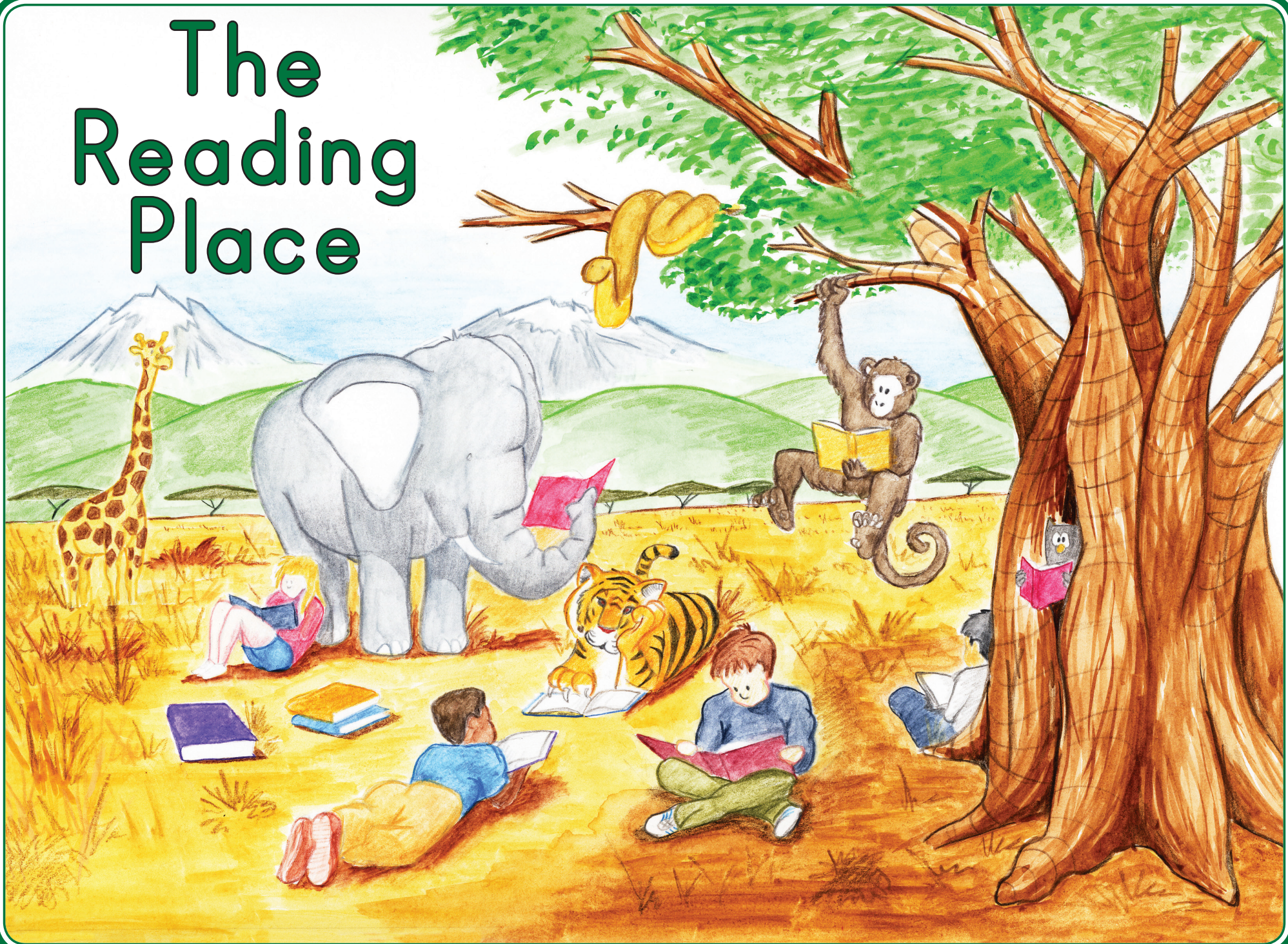


# The Reading Place



# Welcome to The Reading Place!



Come to the wise old baobab tree  
And sit by its side, where the shade is free.  
Our mighty green tree grew from a seed,  
(You'll grow the same way as you learn to read.)  
In the very beginning, some things might seem slow,  
But lots of great words you will soon come to know.  
Reading will make your confidence strong,  
And your love for good books will be lifelong.  
So, come along now; you'll soon be a reader.  
(You'll quickly find out that you're also a leader.)  
Come gather 'round this fine Reading Place.  
Begin with a smile and a bright, happy face!  
We'll make this time count (and have lots of fun, too).  
Everyone here is so proud of you!  
I will be here to help you and guide -  
So, let's read together now - side-by-side.

~ Victoria Beck

# The "Lonely" Vowel at the End of a Syllable

Fun  
with  
Reading

*For Use with Reading Expedition*

61

The Tour Guide says...



A vowel on the end of a syllable or word,  
Is "longing" for a friend, and can be loudly heard.  
It shouts its name out boldly, for others all to hear,  
"I'm lonely on the end! Is anybody near?"

A vowel on the end of a syllable or word calls out its name! There are **no other vowels** with it!

a

a

Exceptions: names of people  
and names of places ending in  
"a", such as:

America

Africa

Antarctica

Oklahoma

Nevada

Tina

Nebraska

Florida

Canada

Gina

Mastered



e

be

he

me

she

we

ye

Mastered



i

I

hi

pi

Exceptions: words which  
have "i" at the end,  
pronounced as "ee", such as:

spaghetti

ski

macaroni

Mastered



o

go

no

so

lo

ho

Exceptions: do and to

Mastered



# U

gnu

Samples of other words  
which contain a lonely vowel  
at the end of a syllable:

e-mo-tion-al

va-ca-tion

ha-lo

con-do

e-go

ho-bo

ju-do

may-be

hi-ber-nate

ra-dar

o-val

vi-o-lin

be-low

me-ow

lo-co-mo-tive

lo-cate

Don't forget to listen to "The Lonely Vowel at the End" song on track 25 of the CD. The Lonely Vowel Rule is different from the One Vowel Rule. The lonely vowel is the only vowel in the word or syllable and is *always* at the end.

Mastered



Mastered



## Making Tracks with Words



She went on vacation with her dad.

We are going to the circus with him.

He has been my best friend for so very long.

Look out below!

Maybe you can go, too.